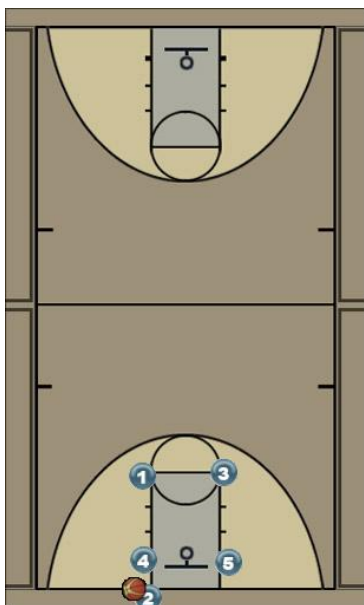




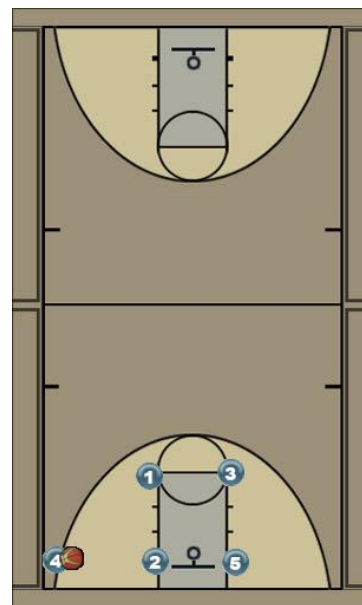
Baseline - Elevator Screen

Movement 1



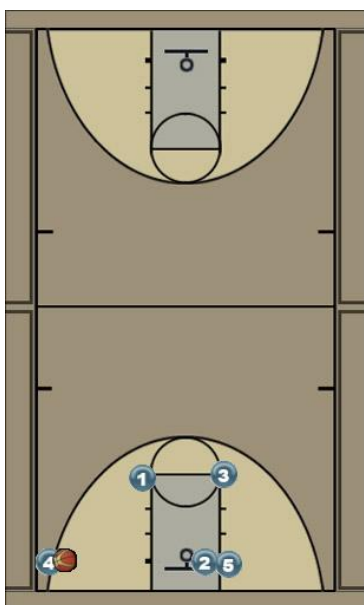
Starts in Basic Box Set. Your best shooter should inbound.

Movement 2



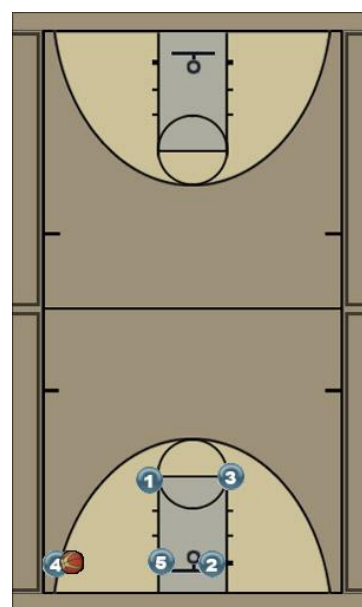
4 pops to ball side corner looking for a pass from the inbounder.

Movement 3



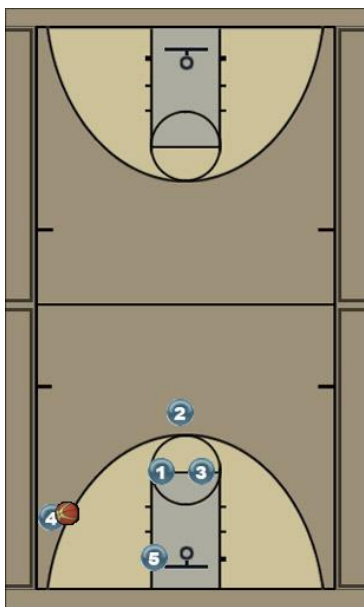
2 steps in and sets a cross screen for the 5.

Movement 4



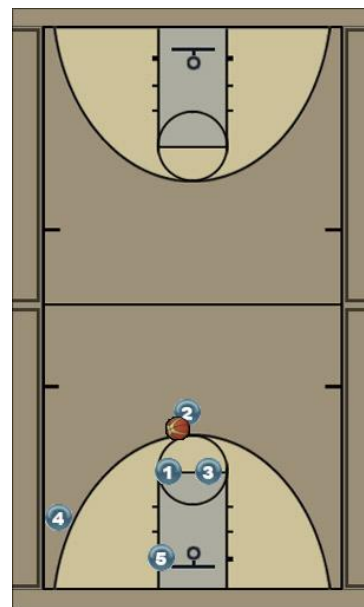
5 Cuts hard to the ball. 4 checks to see if 5 is open or if a smaller defender switched on to the 5.

Movement 5



2 cuts hard up the middle of the key between the 1 and 3 looking for a shot.

Movement 6



1 and 3 get foot to foot and set double screen as 2 gets through

Movement 7

