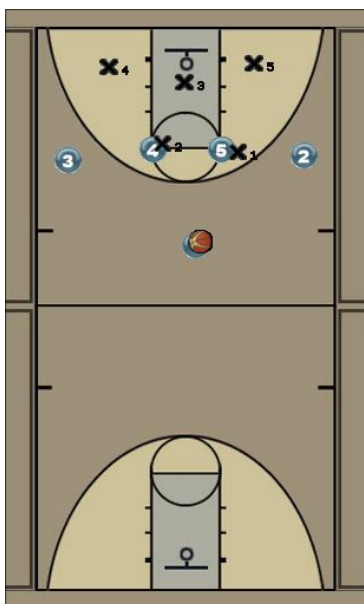


## Titan revised

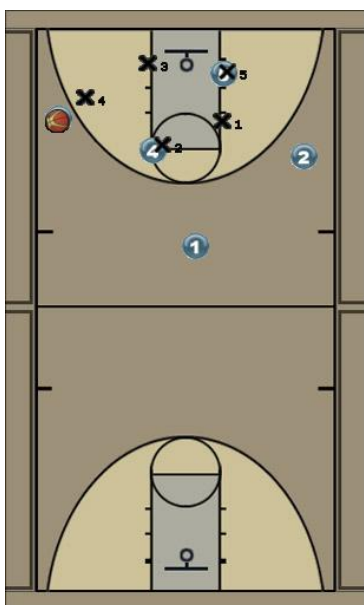
### Initial Set



### Movement 2



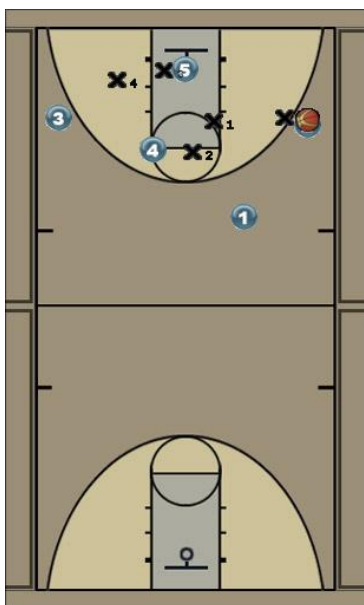
### Movement 3



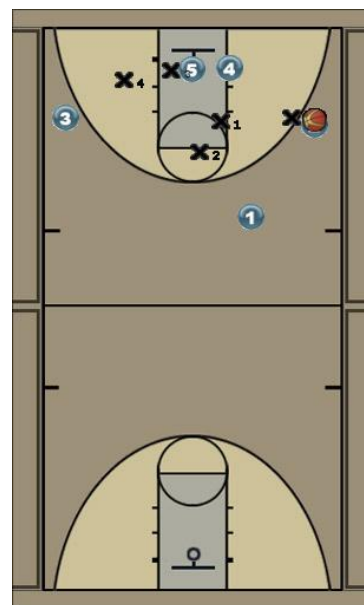
### Movement 4



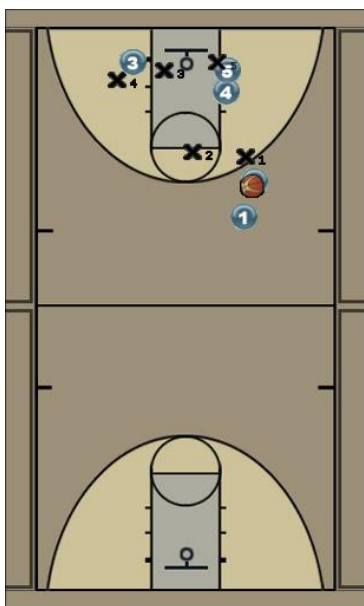
## Movement 5



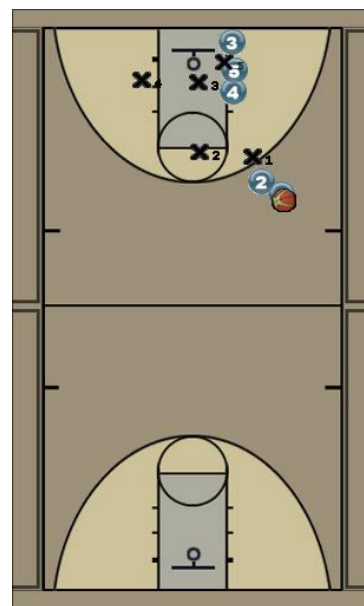
## Movement 6



## Movement 7



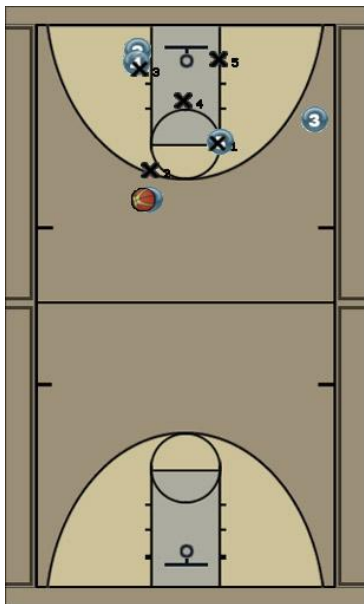
## Movement 8



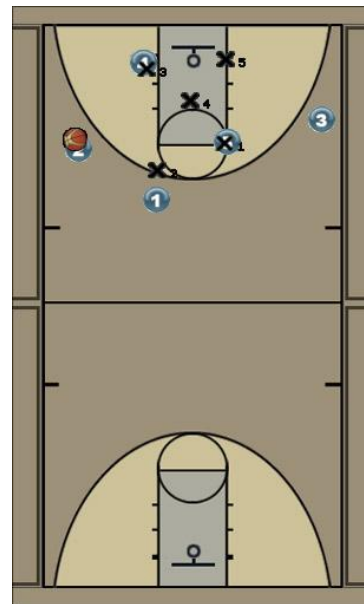
The diagram illustrates the layout of a basketball court for a 3v3 game. The court is divided into two halves by a center line. The top half shows the key area with a center circle, a keyhole, and a key. The bottom half shows the key area with a center circle and a key. The diagram includes numbered circles (1, 2, 5) and 'X' marks indicating player positions and the ball.

## A diagram of a basketball court from a top-down perspective. The court is divided into two halves by a center line. The backcourt (top half) contains a key and a three-point arc. Five players are positioned in the backcourt: Player 1 (black X) is near the basket; Player 2 (blue circle) is at the left wing; Player 3 (blue circle) is at the right wing; Player 4 (blue circle) is at the top of the key; and Player 5 (black X) is at the bottom of the key. A red ball is located between Players 1 and 5. The frontcourt (bottom half) shows the key and free-throw line area without players.

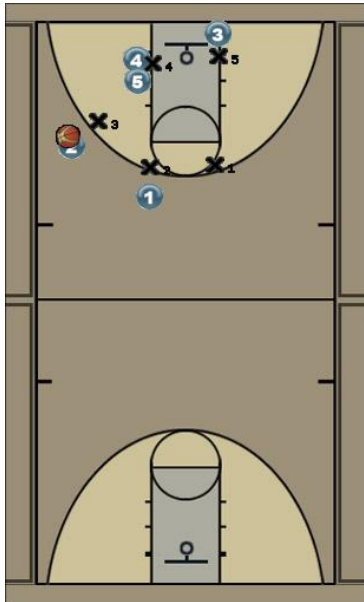
## Movement 13



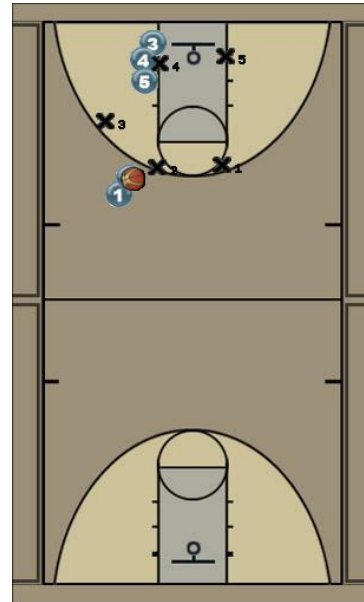
## Movement 14



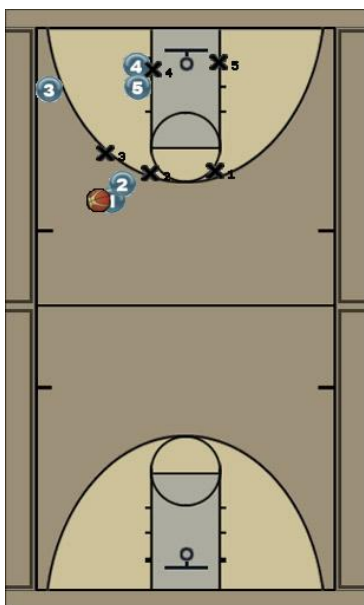
## Movement 15



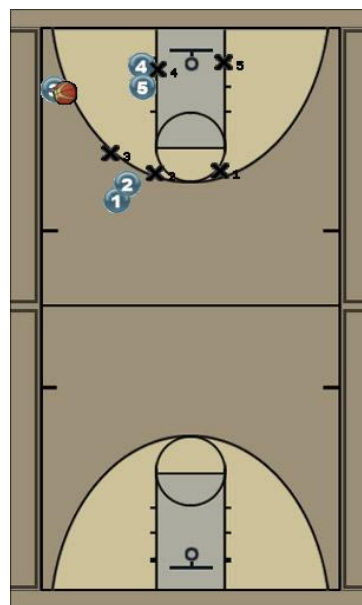
## Movement 16



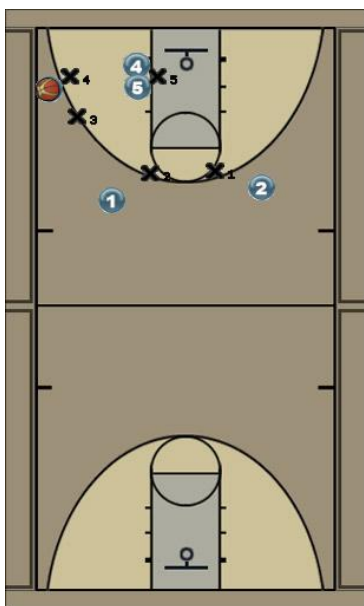
## Movement 17



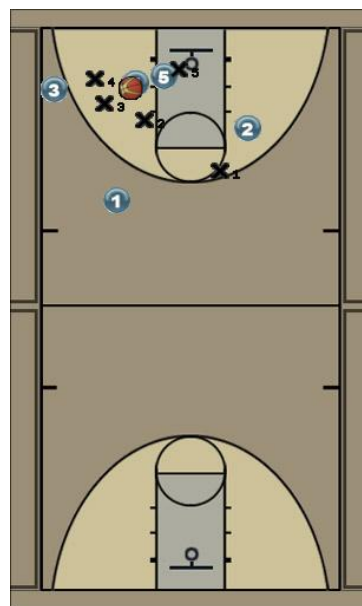
## Movement 18



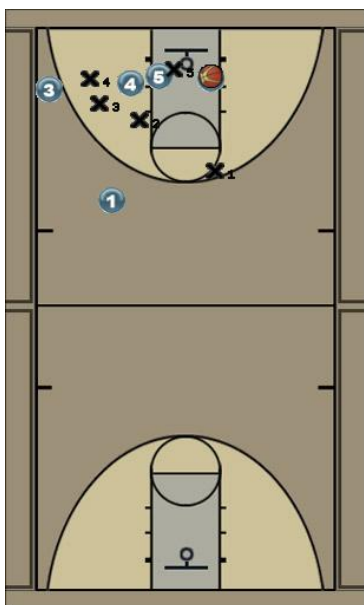
## Movement 19



## Movement 20



## Movement 21



## Movement 22

