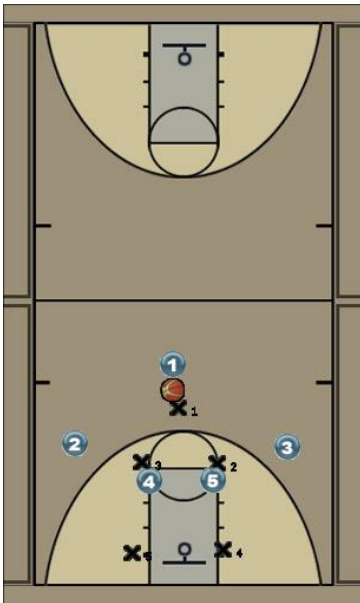
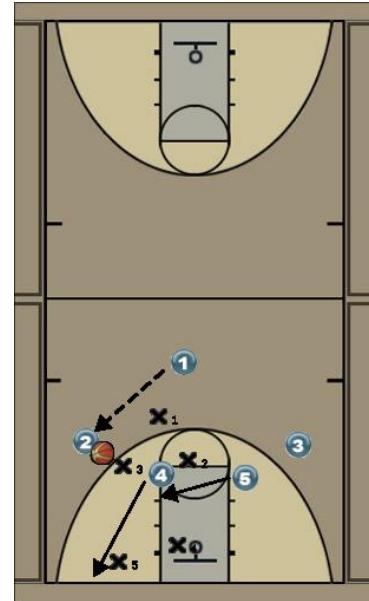


Spin for Shot

Initial Set

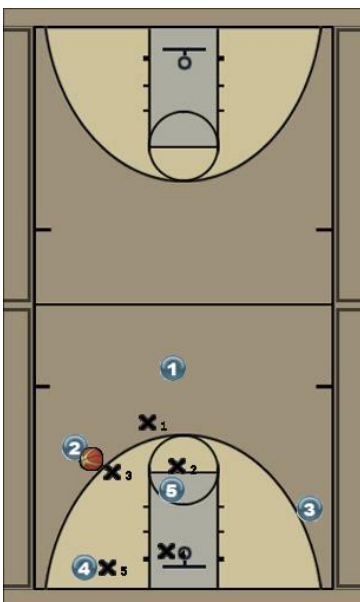


Spin - Pass to the Wing

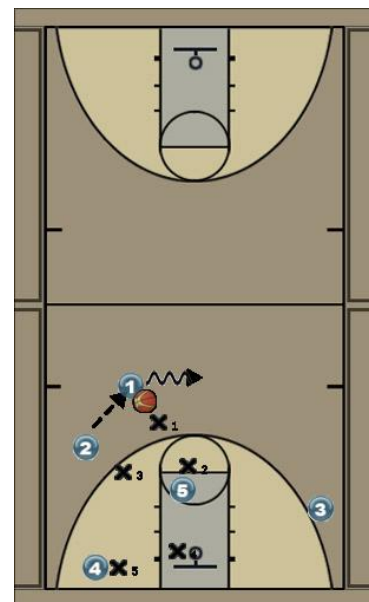


(1) passes to (2), (4) dives to the short corner looking for the ball, (5) flashes to the high post

Defense Shifts

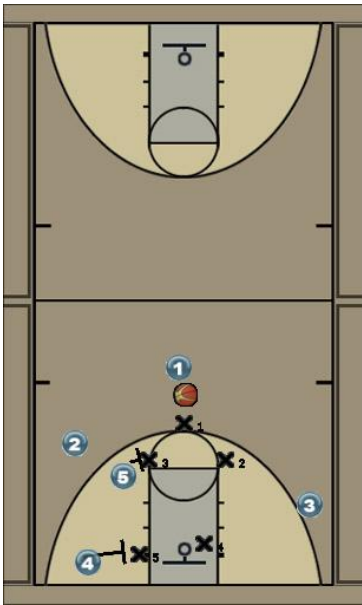


Drag



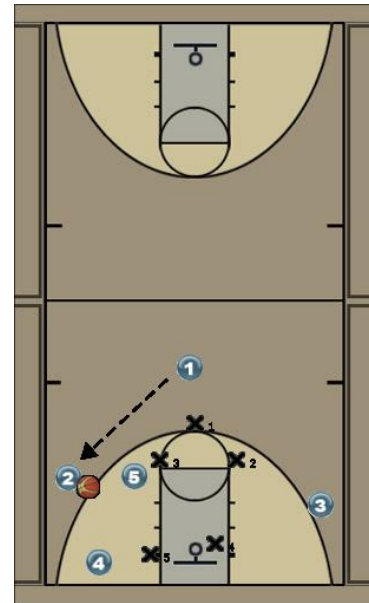
(2) passes back to (1), (1) drag back to middle

Defense shift / (5) /(4) screen



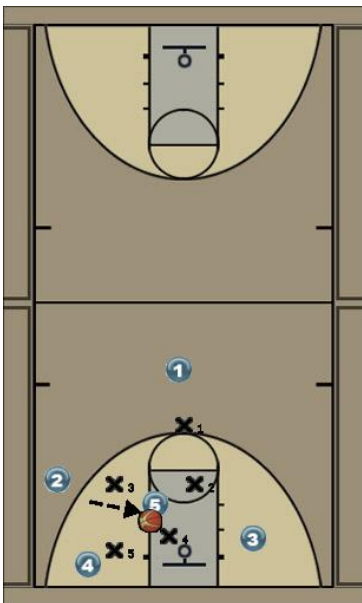
Once the defense shift , (5) and (4) step out and Screen the outside of guys

Shot



(2) shade to the corner for the shot

Options



if (2) has no shot , (5) should open in the gap, for shot or pass down to (4) if baseline defender commit, or opposite to (3) for ally